



Slide Dimmer

■ User Manual



GET MORE SUPPORT

Should you experience any issues while operating any of our products, you can directly reach out to our Customer Support via Amazon Orders or you can send your inquiry to our Official Customer Support at:

✉ support@amicolight.com

☎ +1(888) 676-1042

Monday - Friday from 9:00AM - 5:00PM (PT)

INSTALLATION VIDEO



Need a Video Instruction Guide?
Please scan the QR code.

If the QR code is invalid, please contact us for the video.

SAFETY INFORMATION

- Turn power off before installation, inspection, or removal. Use all necessary precautions while performing this procedure.
- Consult a qualified electrician to ensure correct branch circuit conductor. Min 90°C supply conductors.
- Properly ground electrical enclosure. IT IS IMPERATIVE THAT THE OUTLET BOX BE PROPERLY GROUNDED.
- DO NOT REVERSE THE HOT AND NEUTRAL CONNECTIONS, OTHERWISE SAFETY WILL BE COMPROMISED.

WARNING

This product may represent a possible shock or fire hazard if improperly installed or attached in any way. Product should be installed in accordance with the owners manual, current electrical codes and/or the current National Electric Code (NEC).

RISK OF ELECTRIC SHOCK: TURN OFF THE MAIN POWER AT THE CIRCUIT BREAKER BEFORE INSTALLING.

RISK OF FIRE:

- DO NOT USE WITH CONTROL RECEPTACLE OUTLETS, FLUORESCENT LIGHTING FIXTURES, MOTOR-OPERATED APPLIANCES OR TRANSFORMER SUPPLIED APPLIANCES.
- DO NOT EXCEED ELECTRICAL RATINGS.
- USE ONLY COPPER WIRES WITH THIS DEVICE.
- USE INDOORS ONLY.

IMPORTANT WIRING INFORMATION



Always follow the recommended wire strip lengths and wiring combinations when connecting wires.

Hold stripped ends next to each other and align frayed strands (do not twist wires).

Push wires firmly into wire nut. Using your fingers, twist wire nut clockwise until tight. Check for tightness by pulling wires.

INSTALLING DIMMERS

Step 1. Turn power off

Turn power off at circuit breaker or remove fuse.

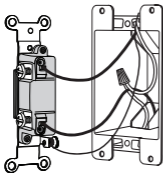
WARNING

SHOCK HAZARD. MAY RESULT IN SERIOUS INJURY OR DEATH. TURN OFF POWER AT CIRCUIT BREAKER BEFORE INSTALLING DIMMER

Step 2. Remove existing dimmer or switch

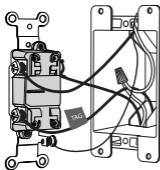
Take off wall-plate and switch by removing mounting screws. Carefully pull out switch from wall (do not remove wires).

Step 3. Identify the type of circuit



SINGLE-POLE:

If switch is wired with insulated wires connected to two screws of the same colour. Go to Step 4a.

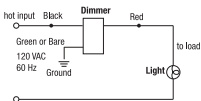
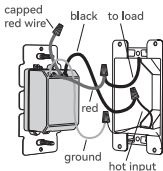


3-WAY:

If switch is wired with insulated wires connected to three screws and one of these wires is connected to a screw of a different colour (not green) or labeled COMMON, mark or tag this wire to identify it when wiring. Go to Step 4b.

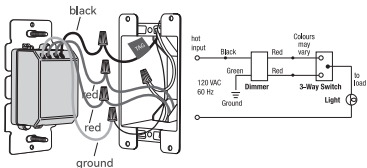
Step 4. Wire your new dimmer

4a Single Pole Circuit



- Connect the green or bare dimmer ground wire to the green or bare copper ground wire in the wall-box.
- Connect the black dimmer wire to the hot input wire removed from the switch.
- Connect one of the red dimmer wires to the light fixture wire (load) removed from the switch.
- Use remaining wire nut to cap the remaining red wire on dimmer.

4b 3-Way Circuit

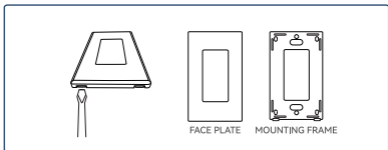


IMPORTANT

In a 3-WAY circuit, only one dimmer can be used.

- Connect the green or bare dimmer ground wire to the green or bare copper ground wire in the wall-box.
- Connect the black dimmer wire to the tag wire removed from the switch.
- Connect the red dimmer wires to the remaining wires removed from the switch.

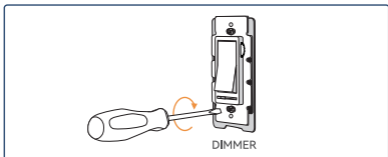
Step 5. Separate mounting frame from wall plate



Gently insert screwdriver into slots to separate mounting frame from wall plate.

(Skip this step if your product does not have a screwless plate)

Step 6. Insert dimmer inside the wall-box



- Carefully position all wires inside the wall-box, leaving enough room to insert the dimmer housing.
- Mount the dimmer securely inside the wall-box using the provided mounting screws.

Step 7. Turn power on

- Turn power on at circuit breaker or replace the fuse. Try out your new dimmer.
- If you're satisfied with dimming range and light output of your bulbs, proceed to step 8.

NOTE

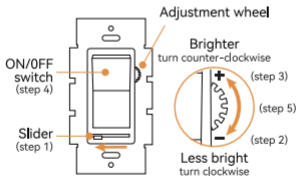
Most dimmable LEDs may not dim as low as incandescent or halogen bulbs, Dimming range of dimmable LEDs can vary from manufacturer to manufacturer, This dimmer has an adjustable dimming range, If your bulbs hum, buzz or flicker see below for dimmer adjustment.

ADJUSTING DIMMING RANGE

The dimmer can be adjusted to eliminate lamp flicker at the low end of the dimming range by following these steps.

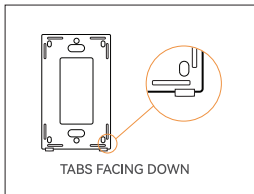
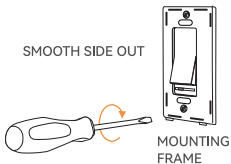
1. Turn dimmer on and move slider all the way to the left.
2. Turn adjustment wheel down (clockwise).

3. Turn adjustment wheel up (counter-clockwise) to achieve lowest light level so that light output is stable for all bulbs. Set your slider to where there's no hum or flickering on all bulbs.
4. Turn dimmer off - then back on to make sure bulbs turn on.
5. If all bulbs do not turn on, turn adjustment wheel up slightly (counter-clockwise) and repeat step 3.
6. Once all bulbs are properly dimming, install face plate.



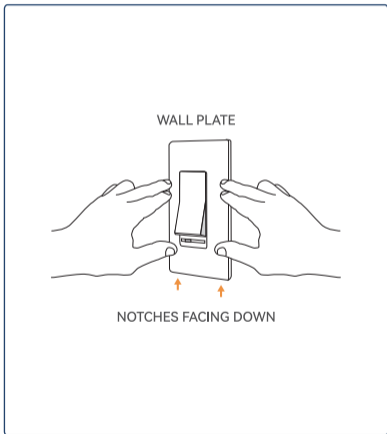
Step 8. Install mounting frame

Place the mounting frame over your installed dimmer and secure it using provided screws.



Step 9. Install wall plate

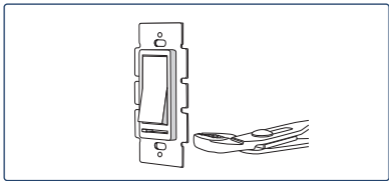
Place the decorative wall plate over the installed mounting frame with the top first then the bottom. Gently push wall plate to ensure flush fit.



MULTI-GANG INSTALLATION

If installing multiple dimmers in the same box, you may need to remove the inside tabs on the dimmers before continuing with the wiring installation (see illustration). [You may also need to purchase multi-gang cover plates (not included)]. If there is a previous dimmer in the switch box, be sure to turn the power OFF at the circuit breaker or fuse box and then remove the wall-plate.

To avoid damage to the dimmer, use a tool such as pliers to grasp the tabs, and move back and forth until they snap off at the break line. Only do this for each row of tabs that need removal so the dimmers will fit side by side in the switch box.



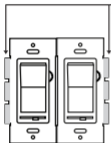
120 Volt · 60Hz

600 Watt MAX incandescent

150 Watt MAX dimmable LED

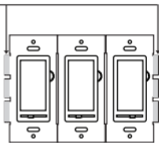
Do NOT Remove Outside Tabs

2 Gang



Both dimmers
have inside tabs
removed

3 Gang



Inside dimmer has both
side tabs removed while
outside dimmers have
only the inside tabs
removed.

Dimming performance may not be the same or similar to dimming of incandescent bulbs. Some possible dimming variations include but are not limited to: less dimming range than an incandescent bulb; dimming less smooth than an incandescent bulb; flicker or shimmer at certain light levels; and, buzzing or humming at certain light levels. warrants the compatibility of this dimmer with LED lighting products dimmable bulbs and replacement of the dimmer is the sole remedy for incompatibility, does not warrant the compatibility of this dimmer with any other particular LED lighting fixture.

If you experience buzzing or flickering when using the dimmer, move the dimmer control to full and readjust the dimming setting to another setting.

CUSTOMER SERVICE

01 30-Day Return Policy

If you're not completely satisfied with your purchase, simply return the merchandise via Amazon Orders. Unused merchandise can be refunded or exchanged within 30 days from the original purchase date.

02 3-Year Warranty

We guarantee your product is free from defects in product material and workmanship for three (3) years starting from the date of purchase during normal use of household conditions. If your appliance fails to operate properly within our warranty period, we will arrange a new replacement free of charge and cover all the shipping costs.

03 Quick Response within 12 Hours

If you are still unable to resolve the issue you are experiencing, please contact us immediately at our support email. It doesn't matter if the product has been installed, our customer support team will respond within 12 hours and assist you quickly and efficiently.

The most efficient way to confirm your problem to us is to attach a video illustrating your product issue.

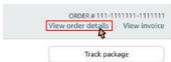
CONTACT US

Step 1



Log into your Amazon.com account, click **"Returns & Orders"** on the top-right corner.

Step 2



Find your order in the list and click **"View order details"**.

Step 3

Delivered yesterday



Click the **"Store Name"** following the Sold by, below the product title.

Step 4




Click the yellow button **"Ask a question"**, on the top-right corner, to contact the seller.



GET MORE SUPPORT

Should you experience any issues while operating any of our products, you can directly reach out to our Customer Support via Amazon Orders or you can send your inquiry to our Official Customer Support at:

 support@amicolight.com

 +1(888) 676-1042 Monday - Friday from 9:00AM - 5:00PM (PT)

MADE IN CHINA